

Statistics Department Internship Day Sapienza University of Rome



Serena Puglia
28th November 2025



GIMEMA FOUNDATION

- The Gruppo Italiano Malattie Ematologiche dell'Adulto (GIMEMA) is a recognised institution that coordinates a national network involving **almost all Italian haematological centers**. It also manages a broad range of international collaborations.
- The GIMEMA Foundation was established in **1982** based on a suggestion by **Professor Franco Mandelli**.
- **GIMEMA research** aims to improve the standard of care and Quality of Life for patients with haematological diseases.

👉 43 YEARS OF RESEARCH

👉 58 CLINICAL TRIALS IN 2024

👉 40 PUBLICATIONS IN 2024

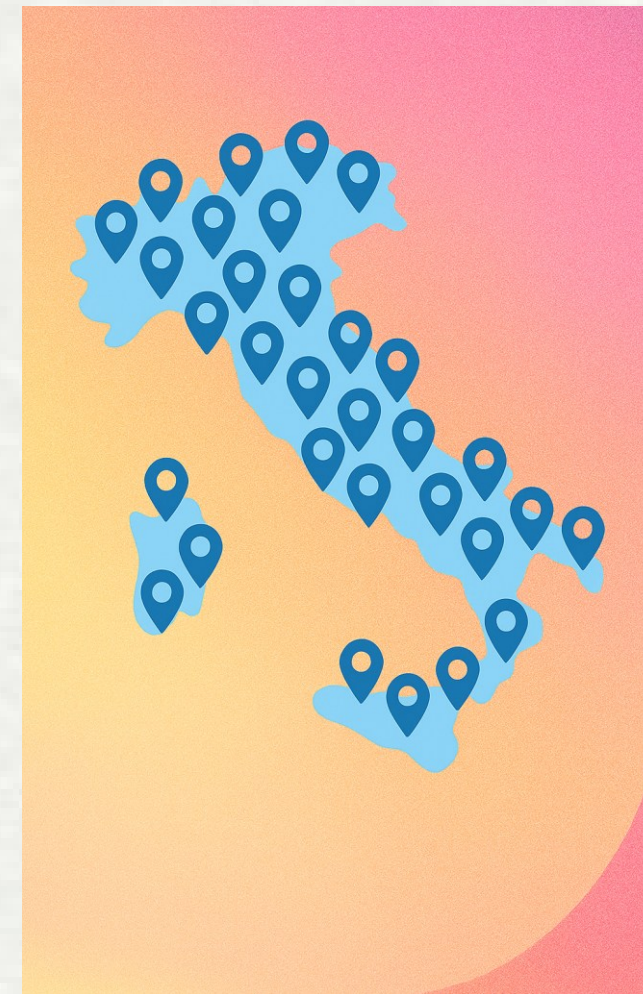
👉 140+ CENTERS IN ITALY

👉 60+ LABS IN ITALY

👉 9 WORKING PARTIES

GIMEMA: Strengths of a National Network

Through a network organization, which also boasts a complex **centralized diagnostic tasks**, all Italian centers belonging to GIMEMA provide patients with the **same diagnostic and therapeutic procedures** regardless of their place of care.



Working parties

Workies Parties GIMEMA

Acute Leukaemia and
Myelodysplastic Syndrome WP

Chronic Myeloproliferative Neoplasm
WP

Chronic Lymphoproliferative
Syndromes WP

Thrombocytopenia and Anaemia WP

Immunotherapy WP

Haemostasis and Thrombosis WP

Quality of life WP

Infection WP

Multiple Myeloma WP

The Working Parties (WP) are at the core of GIMEMA's scientific operation. They are **work teams** focusing on specific topics in the field of haematology.

The WPs are scientifically autonomous and operate in full compliance with the procedures that the Foundation adopts in conducting its **clinical trials**.

Some are geared towards specific pathologies while others adopt a more cross-sectional approach to address a variety of topics.

Headquarter: GIMEMA Data Center



Data Center

- The Rome-based **Data Center** is the operational hub that coordinates all of the Foundation's research activities.
- It is a structure of excellence, certified at European level and internationally acknowledged for the management of Clinical Trials.
- **More than 40 people, specialized in many different areas, work at the Data Centers.** They include doctors, biologists, project managers, IT experts, data managers, statisticians and legal personnel.

Main Activities

- **Design and organisation of Clinical Trials:** from concept to protocol drafting, management of regulatory affairs and communications with Ethics Committees and competent authorities.
- **Clinical trial conduct,** coordination of participating centers, data collection management.
- **Pharmacovigilance, statistical analysis and publication** of reports and scientific papers.
- Organization of training courses and **scientific dissemination activities**



The role of biostatistics In gimema foundation activities



Study Design:

Biostatistics aids in structuring clinical trials to ensure scientifically sound methods and robust outcomes.



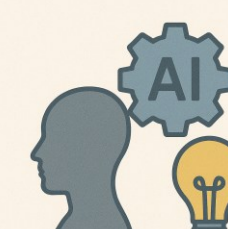
Data Management and Analysis:

Advanced biostatistical techniques are used to handle large datasets, ensuring accurate data analysis to support clinical decisions.



Outcome Prediction Models:

Biostatistics enables the creation of predictive models for patient outcomes, improving personalized treatment strategies.



Support for Innovation:

Biostatisticians are essential in integrating AI and machine learning for innovative solutions in trial analysis and patient care

Statistician in Quality of Life unit

What's Quality of Life?

Beyond survival: a multidimensional measure of a person's physical, psychological and social well-being.

Role of PRO (Patient-Reported Outcomes)

Standardized, validated questionnaires capturing patients' direct reports on symptoms, functioning and health status.

ROLE OF THE BIostatistician

Analyze QoL data from validated questionnaires

1. Model **QoL trajectories** over time
2. Assess the **impact of therapies** on QoL
3. Evaluate associations between QoL and clinical outcomes (including **survival**)

New Perspectives...

- Use of **AI and ML & Synthetic Patients**



Internship at GIMEMA



Join us for your thesis project!
Send your CV and motivational letter to..

candidature@gimema.it



**Thank you
for listening**

& see you later for Q&A